

# The LED light box experts.

Swiss systems from a single source  
direct from the manufacturer.



**Richnerstutz**

**140**

**brilliant minds**

**24h**

**working**

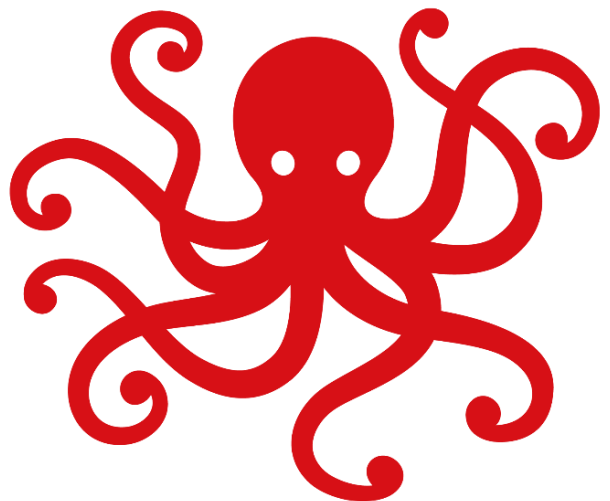
**12,000 m<sup>2</sup>**

**production floor space**

**“Hi there!” We are Richnerstutz**

**Our company logo  
has a wise head  
and many arms.  
Just like us.**

Richnerstutz, Nordstrasse, Villmergen, Aargau – this is where we are based, where we have our production facilities as well as our offices and studios. This is where we are inventors, advisers, planners, specialists, problem solvers, project managers and implementers. This is where we develop and produce everything that transforms communication into a three-dimensional experience: signage systems, advertising technology, temporary architecture and tenting, fixtures and fittings for events, trade fairs and shops, outdoor advertising, digital signage and a whole lot more.



# Custom-made LED light boxes with tensioning frame profiles.

- direct close attention towards an advertising message or a topical theme.
- are perfect for interior settings, at the POS and at trade fairs and events.
- conspicuously highlight particular areas within the available space.
- create a harmonious ambience.
- can be quickly and easily adapted to display a new theme.
- produce a uniform quality of light across their entire surface.
- generate optimum luminosity thanks to the use of dimmers.
- work well under all light conditions.

# Richnerstutz. Custom-made LED light boxes.

Messaging perfection  
day and night.

**One system, numerous possibilities.**



Available in all shapes and sizes and in a range of colours, these attractive communication formats can be set up, hung or fixed in any indoor or outdoor space.

Designed either as a one or two-sided system or with the benefit of a special printing process (Day & Night), our LED light boxes manufactured using tensioning frame profiles will grab the attention of your target audiences and ensure the desired effect at events, trade fairs, at the POS and for shopfitting applications.

Developed and manufactured by Richnerstutz, these complete systems from a single source are of impressively high quality and boast short delivery times.



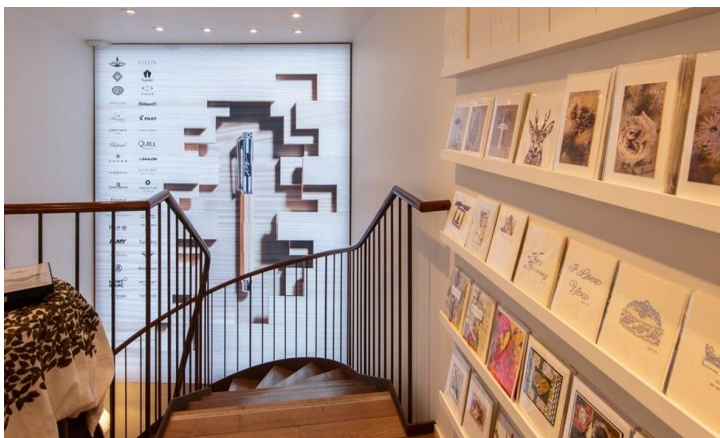
# Richnerstutz. Custom-made LED light boxes.

One system, many advantages.

**Sustainable, efficient and flexible.**



- Energy-efficient and long-life LED technology
- Dimmable using 2.4 GHz remote control (as standard)
- Optional control by DMX or Dali
- No-nonsense theme change due to flat keder groove tensioning frame (rubber lip)
- Can be set up free-standing or wall or ceiling-mounted
- Guarantee: frame and technology 2 years; printing 1 year
- Swiss systems from a single source direct from the manufacturer



# Richnerstutz. Custom-made LED light boxes.

LED light boxes  
Standard one-sided  
Indoors.



Profile: Pro-2004.3

LED modules fitted in the side  
profile (frame illumination)

**MSI-6001 rsLightbox standard one-sided  
LED feed in 1 frame**

**MSI-6002 rsLightbox standard one-sided  
LED feed in 2 frames**

- Design depth 70 mm
- 2 mm DiLite rear wall
- 230V, 45Watt/lfm
- Cabling supplied, ready to plug in
- Mitred corners, each with 2 corner brackets
- Special lenses, no shadows
- 1 frame = up to approx. 1 metre (width and height)
- 2 frames = up to approx. 2 metres (width and height)

## Note:

- To ensure uniform illumination, the Premium variant should be used from approx. 2 metres.

# Richnerstutz. Custom-made LED light boxes.

LED light boxes  
Premium one-sided  
Indoors.



## MSI-6003 rsLightbox Premium rear LED illumination

- Design depth 70 mm
- 2 mm DiLite rear wall
- 230V, 75Watt/m2
- Cabling supplied, ready to plug in
- Mitred corners, each with 2 corner brackets
- Advantage: uniform illumination
- Top quality illumination thanks to LED stripes
- Control by DMX or Dali possible
- Day & Night possible
- Stripes are applied and soldered to the rear here in Switzerland

Profile: Pro-2004.3

LED stripes applied to the rear

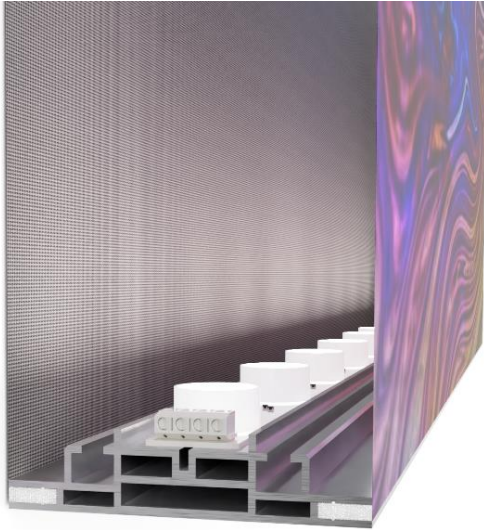
### Note:

- Day & Night = 5 layer print possible; as soon as the lighting is switched on, different layers of colour appear, changing or enlivening the chosen theme.



# Richnerstutz. Custom-made LED light boxes.

LED light boxes  
Standard double-sided  
Indoors.



Profile: Pro-2004.6

LED modules fitted in the side  
profile (frame illumination)

**MSI-6010 rsLightbox standard double-sided LED feed in 1 frame**

**MSI-6011 rsLightbox standard double-sided LED feed in 2 frames**

- Design depth 100 mm
- Flat keder groove on front and rear sides
- Special lenses, no shadows
- 1 frame = up to approx. 1 metre (width and height)
- 2 frames = up to approx. 2 metres (width and height)

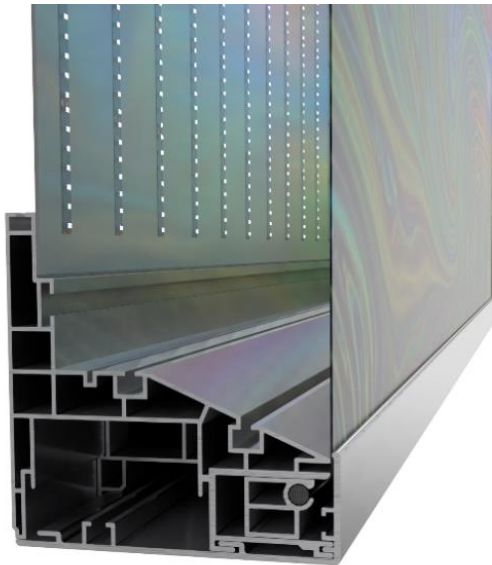
## Note:

- This profile can be curved or bent.



# Richnerstutz. Custom-made LED light boxes.

LED light boxes  
XL one-sided  
Indoors + outdoors



## MSI-6300 rsLightbox XL (Indoor) MSO-6300 rsLightbox XL (Outdoor)

- With rear or frame LED illumination
- With its 150 mm design depth, this profile boasts an electrical services duct running around the frame; this permits servicing to be carried out without having to remove either the fabric or the canvas. This depth also allows the optional installation of flat screens
- Keder systems for tensioning the canvas and fabric are integrated into this profile.
- Can be built up module by module using corner brackets and longitudinal connectors

Profile: Pro-1004e

Rear-illuminated LED stripes

### Note:

- Can be fitted anywhere, but be aware of its weight

# Richnerstutz. Custom-made LED light boxes.



# Any questions?

We look forward to hearing from you



Richnerstutz AG  
Nordstrasse 7  
CH-5612 Villmergen  
T: +41 56 616 67 67  
[info@richnerstutz.ch](mailto:info@richnerstutz.ch)